

50-320 Oscillating Spindle Sander Manual Supplement - Page 14

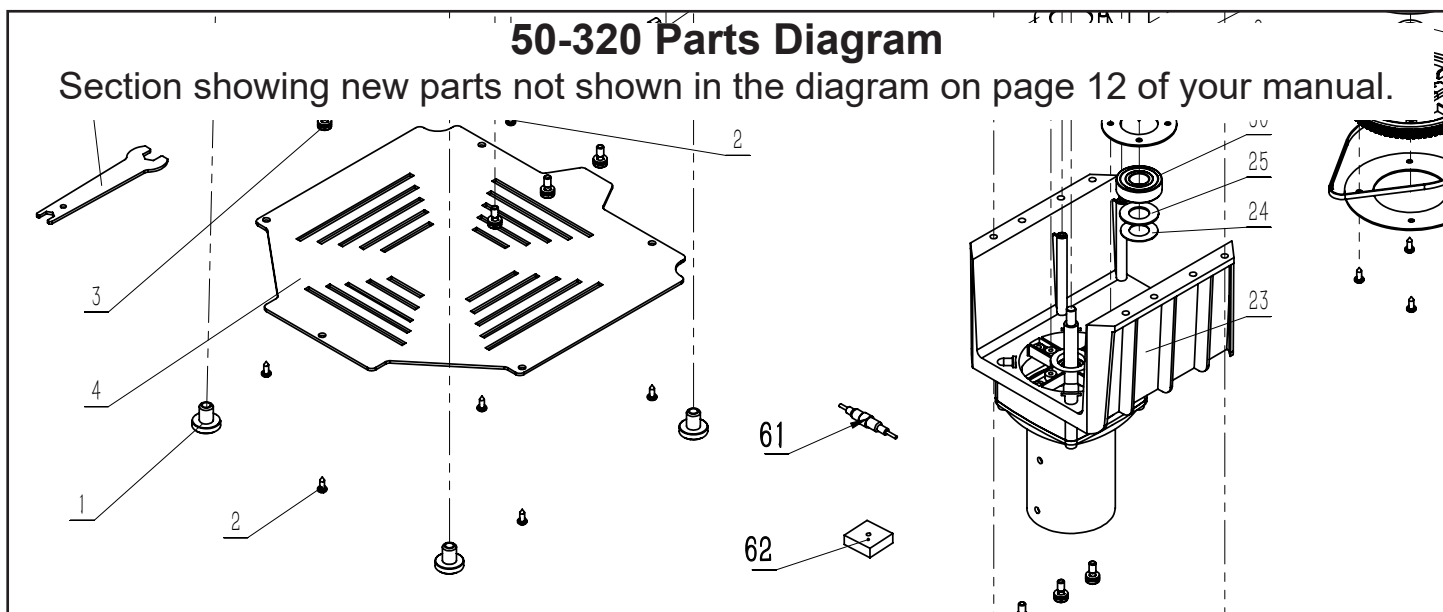
Change of Wiring Color and Addition of Parts

After the publication of the first 50-320M1 Sander's manual, an update on the machine's electrical system was issued. Below is the current information on the parts and wiring changes for the machine.

- NEW Part **61 Fuse Link** - 5x20mm 10A Glass Fuse 250V. Replacement No. P50-320-61
- NEW Part **62 Rectifier Bridge**. Replacement Order Number P50-320-62
- Wires from the Rectifier Bridge to the switch and Neutral line change color from black to white.

50-320 Parts Diagram

Section showing new parts not shown in the diagram on page 12 of your manual.



50-320 Wiring Diagram

Diagram showing new Rectifier Bridge, red Fuse Line and change of wire colors going from Rectifier Bridge to the switch and Neutral (black being changed to white).

